

**Perth City:
Youth Survey
August 1997**

**Analysis &
Conclusions**

Table of Contents

EXECUTIVE SUMMARY	1
SECTION 1: SURVEY SUMMARY	2
1.1 Introduction	2
1.2. Survey Population	2
1.3. Demographic Information about the Young People Interviewed	4
1.3.1 Home Address	4
1.3.2 Frequency of Visiting the City	4
1.3.3. Usual Days for Visiting the City	5
1.3.4. Time of Day for Visiting the City	7
1.3.5. Time Spent in the City	7
1.3.6. Transport to the City	7
1.3.7. Spending Power	8
1.3.7.1. Amount of Money Young People Bring to the City	8
1.3.7.2. Spending on Food & Drink in the City	9
1.3.7.3. Spending on Entertainment Each Week (Not just in the City)	9
1.4. Young People's Views and Expectations of the City	10
1.4.1. The Reasons Young People Are Attracted to, or Come to, the City	10
1.4.2. Issues & Concerns of Young People in Relation to the City	10
1.4.3. Consulting Young People	11
1.4.4. Conclusions in Relation to Young People's Views and Expectations of the City	11
1.5. Young People's Needs in Relation to Youth Facilities in the City	12
1.5.1. Preferred Activities at an Inner City Youth Facility	12
1.5.2. Frequency of Use for an Inner City Youth Facility	12
1.5.3. Willingness to Contribute Time & Skills	13
1.6. Section 2 of the Survey: Young People's Preferences in Relation to Skateboarding, BMX & Inline Skating	13
1.6.1. Number of Participants in Skateboarding, BMX, Inline Skating	13
1.6.2. Demand for an Inner City Skate Park	14
1.6.3. Preferred Time for Skating/Riding	15
1.6.4. Charges for Inner City Skate Park (Affordability)	15
1.6.5. Skateboarding Accidents on Roads and Footpaths	16
1.7. Conclusions	16
section 2: SURVEY DETAIL	19
2.1. Introduction	19
2.1.1 Background Information	19
2.1.2 Survey Objectives	20
2.2 Research Method	21
2.2.1. Survey Design	21
2.2.2 Data Collection: Location	21
2.2.3. Data Collection: Timing	22
2.2.4. Interviewers	23
2.3. Survey Population	23
2.3.1. City Survey	23
2.3.2. Suburban Survey: BMX & Skateboarding	25
2.4. Survey Data	25
2.4.1. Demographic Information about the Young People Interviewed	26
2.4.1.1. Home Address	26
2.4.1.2. Frequency of Visiting the City	28

2.4.1.3.	Usual Days for Visiting the City	28
2.4.1.4	Time of Day for Visiting the City	29
2.4.1.5.	Time Spent in the City	30
2.4.1.6.	Transport to the City	31
2.4.1.7.	Spending Power	31
2.4.1.8.	Amount of Money Young People Bring to the City	31
2.4.1.9.	Spending on Food & Drink in the City	32
2.4.1.10.	Spending on Entertainment Each Week (Not just in the City)	33
2.5.	Young People's Views and Expectations of the City	33
2.5.1.	The Reasons Young People Are Attracted to, or Come to, the City	33
2.5.2.	Issues & Concerns of Young People in Relation to the City	35
2.5.3.	Consulting Young People	37
2.6	Young People's Needs in Relation to Youth Facilities in the City	38
2.6.1.	Preferred Activities at an Inner City Youth Facility	38
2.6.2.	Frequency of Use for an Inner City Youth Facility	40
2.6.3.	Willingness to Contribute Time & Skills	41
2.7.	Part 2 of the Survey: Young People's Preferences in Relation to Skateboarding, BMX & Inline Skating	42
2.7.1.	Number of Participants in Skateboarding, BMX, Inline Skating	43
2.7.2.	Demand for an Inner City Skate Park	44
2.7.3.	Preferred Time for Skating/Riding	44
2.7.4.	Charges for Inner City Skate Park (Affordability)	45
3.	APPENDICES	46
3.1.	Appendix 1: Membership of the Integrated Youth Facility Reference Group	46
3.2.	Appendix 2: Survey Form	47

EXECUTIVE SUMMARY

This report presents the results of a comprehensive survey of over 600 young people undertaken to understand the needs and expectations of young people in Perth (including Northbridge). It is part of the business case for an inner city youth facility and will contribute to the City of Perth's youth strategy.

Demographic information was collected as well as young people's views and expectations of the City and young people's needs in relation to youth facilities.

Of the young people interviewed only 7% live in or near the City. Most came to the City by public transport from all parts of the metropolitan area, and stayed for considerable periods of time. In many cases they had limited money to spend on food drink and entertainment.

When considering the demographic profile together with the views of young people in relation to the City, the picture emerges of a City environment, which is not welcoming to young people, and especially those who cannot afford to pay for entertainment at commercial venues. Young people reported feeling alienated, being hassled by police and security guards, feeling unsafe, and having nowhere to go and nothing to do in the City. Yet despite these problems many young people continue to come to the City as a place to be with their friends and find entertainment.

Further, the data supports the need for a youth facility offering a range of youth activities (from high-energy sports such as skateboarding to youth arts and culture). It confirms that young people would not only use such a facility extensively but would also contribute their time and skills to develop and run this centre.

The opportunity is there to involve young people in developing a leading edge inner city youth facility, to transform the feeling of alienation to one of belonging, and to give young people a responsible role in the success of the City of Perth as an international capital city.

SECTION 1: SURVEY SUMMARY

1.1 Introduction

This report analyses the results of a youth survey conducted in the City of Perth from 25th July to 3rd August 1997.

For the purpose of this report youth is broadly defined as the group between approximately 12 years and 25 years of age.

The survey was undertaken to increase understanding of youth needs and expectations in order to assist in the development of youth facilities within the City of Perth. The survey was supported by the Integrated Youth Facility Reference Group¹ and the City of Perth. Further details of the background to the survey and its objectives, plus the detailed data, are provided in Section 2 of this report, Survey Detail.

The survey questionnaire is provided at Appendix 2.

Data was collected via a street intercept survey. Young people administered the survey in order to achieve rapport with, and the confidence of, the young people being interviewed;

Two types of data collection locations were used:

1. The City (the major focus of the survey);
2. Suburban locations related to BMX or skateboarding (a minor focus of the survey), to gain an indication of potential usage of City skateboarding and BMX facilities by young people outside the City in order to develop the business case for the youth facility. Also included in the suburban locations' data are the results of a focus group session held in Fremantle where young people attended a gig and were given the opportunity by SKAWA interviewers to complete the questionnaire (part 2) and provide ideas for activities for inclusion in the business case.

[Inclusion in the survey of young people in suburban locations enhanced the research method and increased the validity of the survey results by introducing a mechanism to compare the behaviours and expectations of those interviewed in the inner city with those interviewed in the suburbs.](#)

Throughout this report each element of the analysis states whether the results represents the total data collected, or each of the individual locations as shown above.

Deleted: ¶

The interviewers administering the survey were members or associates of SKAWA. There were 8 interviewers, 5 male and 3 female, in the age group 19 to 24 years. All interviewers were specially trained in administering the survey, in order to encourage young people to participate, to achieve consistency of interpretation, and to avoid bias. On completion of the survey the interviewers confirmed that they had attempted to interview a wide cross section of young people, not giving preference to any age, gender, nationality or sub culture.

1.2. Survey Population

As shown below of the 438 young people interviewed in the City:

¹ See Appendix 1 for membership of the Reference Group.

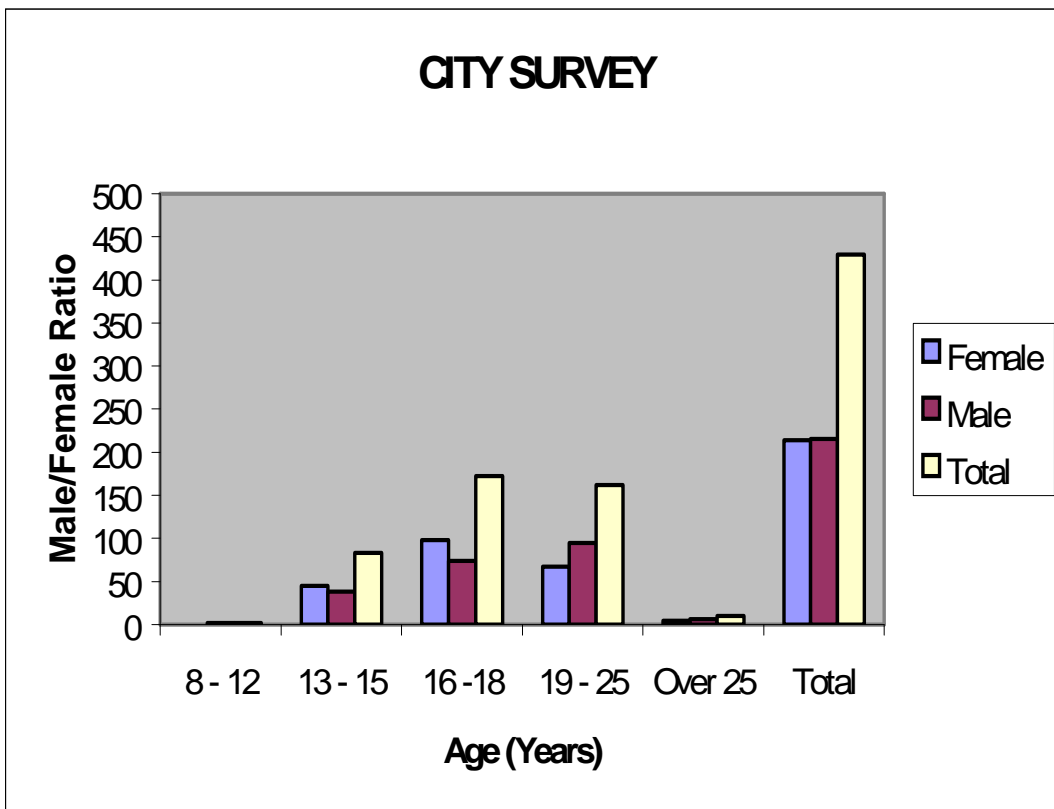
- 50% were female and 50% male;
- 60% were under 18 years of age; 20% were under 15 years.

For the 170 young people interviewed in the suburbs:

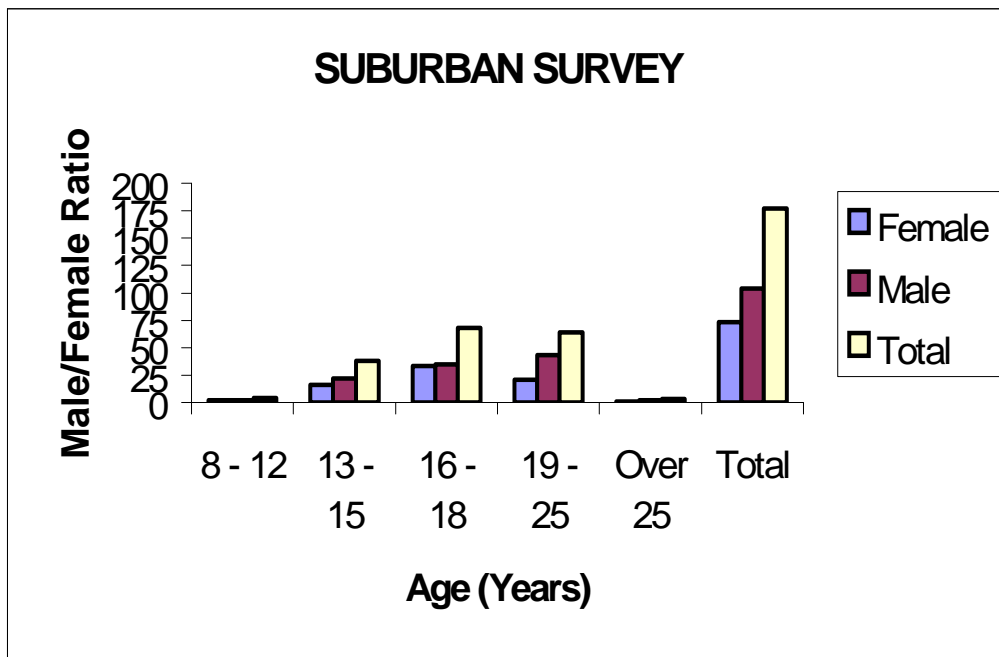
- 41% were female and 59% were male;
- 61% were under 18 years of age; 23% were under 15 years.

Grouping by age and gender is shown below:

City Survey: n = 438 (9 were blank in relation to age or gender)



Suburban Survey: n = 179 (2 were blank in relation to age or gender)



1.3. Demographic Information about the Young People Interviewed

1.3.1 Home Address

Typically Local Government Authorities have a primary focus on planning for the residents within their municipality, with some recognition of visitors and those passing through. However, it was suspected that this focus on residents would not be so relevant in the development of youth strategies by the City of Perth, given the capital city nature of the municipality. The data gathered in relation to home address strongly reinforces this view showing that.

- Only 7% of those young people interviewed in the city live in the City, Northbridge, East Perth or West Perth;
- Only 21% of those young people interviewed in the city lived in the City, Northbridge, East Perth, West Perth, or nearby suburbs;
- There is a fairly even spread of young people travelling from all areas of the metropolitan area to the City, with some higher concentration in percentage for those areas nearer the City or with ready access to public transport (especially the train).

1.3.2 Frequency of Visiting the City

City Population:

For those interviewed in the City, frequency of visiting the City was:

- Every couple of weeks: 17%;
- Once a week: 16% ;
- Weekends: 10%;
- 2-3 times each week: 28%;
- Daily: 28%.

The data highlights that young people are frequent visitors to the City, with 56% coming to the City 2-3 times each week or daily.

Of those visiting daily, 50% were under 18 years of age, and for those visiting 2-3 times per week, 45% were under 18 years of age.

Suburban Population:

For those interviewed in the suburbs, the pattern of visiting the City was:

- Every couple of weeks: 11%;
- Once a week: 21%;
- Weekends: 11%;
- 2-3 times each week: 16%;
- Daily: 28%

For this group those visiting the City 2-3 times each week or daily were 44%, just slightly less than the 56% for the group interviewed in the City.

For the suburban group, of those visiting daily, 50% were under 18 years of age (the same as for the City group) and 52% of those visiting 2-3 times each week were under 18 years (compared to 45% for the City group).

Thus, analysis of frequency of visiting the City shows that there are no significant differences between the group interviewed in the City and the group interviewed in the suburbs, and that a high proportion of young people under 18 years are frequent visitors to the City. This demonstrates that the City is an important place for young people to meet and socialise.

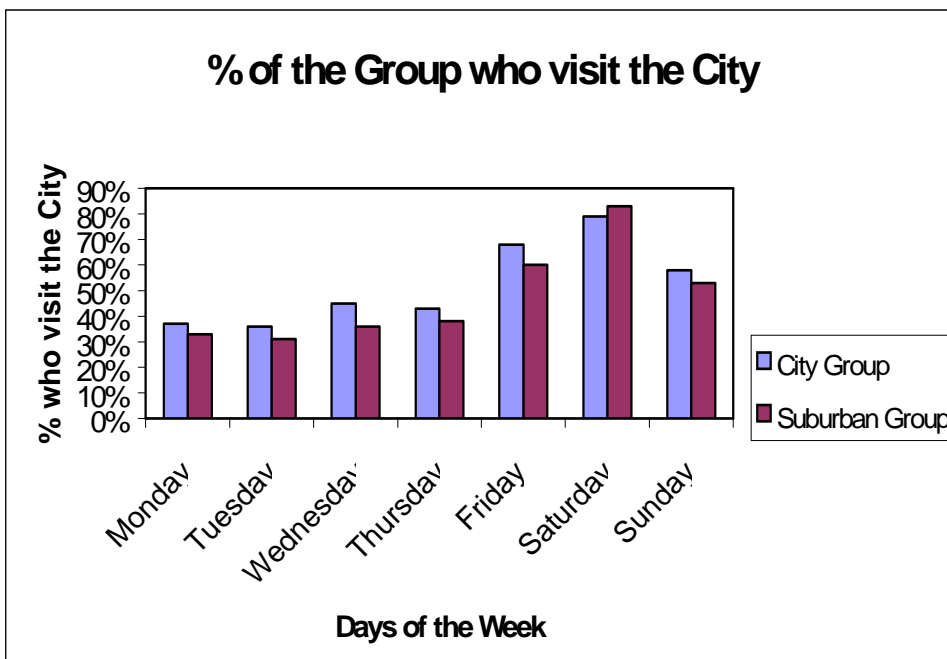
1.3.3. Usual Days for Visiting the City

Respondents indicated that the most popular day for visiting the City is Saturday, followed by Friday, then Sunday.

When comparing those young people interviewed in the City with those interviewed in the suburbs, the data indicates:

- A slightly higher percentage of those interviewed in the City visit the City on days from Monday to Friday;

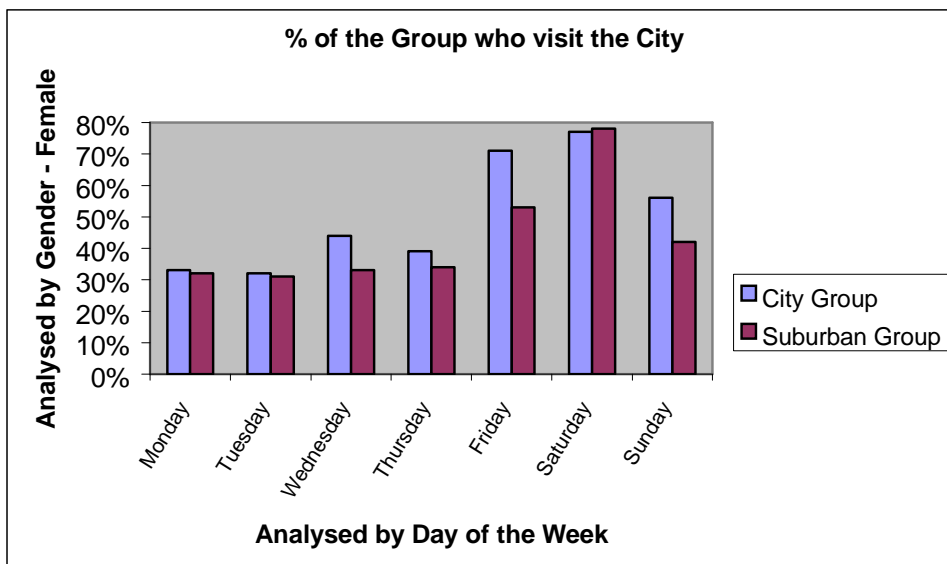
- A higher percentage of those interviewed in the suburbs come to the City on Saturdays in comparison to the City interviewees.



Overall, the data shows that, as expected Friday and Saturday are the most popular days for visiting the City, followed by Sunday. Monday to Thursday there is an even spread of young people visiting the City. The indication is that there is a need to make provision for young people in the City every day of the week, with special provision on Fridays and Saturdays.

The above data was also analysed by gender to determine the percentage of males and females in each of the two groups who visit the City on particular days of the week.

% of the group who visit the City, analysed by day of the week and gender:



The analysis shows little significant difference between males and females apart from the greater number of suburban males stating that they visit the City on Sundays (61% male, 42% female).

1.3.4. Time of Day for Visiting the City

Afternoon (12 noon to 6 pm) was the most popular time for visiting the City, making up 43% of the responses from those interviewed in the City, and 50% of the responses for those interviewed in the suburbs.

Evenings (6pm - 10 pm) were the next most popular category (24% of the City group and 20% of the suburban group).

The time of day for visiting the City was also analysed by gender, and there were no significant differences in times of visiting the City between males and females.

1.3.5. Time Spent in the City

The data indicates that most young people interviewed were coming to the City for a purpose rather than passing through, for example:

- For those interviewed in the City:
 - Only 3% typically spent less than 1 hour in the City;
 - 60% were, on average, spending more than 3 hours in the City on each visit.
- For those interviewed in the suburbs:
 - Only 1% spent less than 1 hour in the City;
 - As for the City group, 60% spent more than 3 hours in the City on each visit.

This data is very significant when linked to the frequency of young people visiting the City. Young people are not only visiting the City frequently, but are spending long periods of time on each visit.

Again the close similarity of the data between the two groups highlights that there is little difference in behaviour of the two groups.

1.3.6. Transport to the City

Once again there were no significant differences in methods of transport between the group interviewed in the City and the group interviewed in the suburbs.

The data highlighted the popularity of train transport followed by bus for young people travelling to the City:

- 44% of young people use the train to travel to and from the City;
- 21% use the bus;
- 18% use a combination of bus and train.

As expected, private transport becomes relevant only as young people move into the older age brackets:

- 11% use private transport, and of these young people 87% are in the 16-25 year age bracket.

Overall, the data confirms both the importance of public transport and young people's concerns for the inadequacies of the public transport system. (See 1.4.2)

1.3.7. Spending Power

Three questions related to the financial situation of young people:

- How much \$ on average do you bring with you to the City?
- How much do you spend on food/drink when you come to the City/Northbridge?
- How much can you afford to spend on entertainment each week?

Once again, no significant differences were found in the financial data between the two groups surveyed.

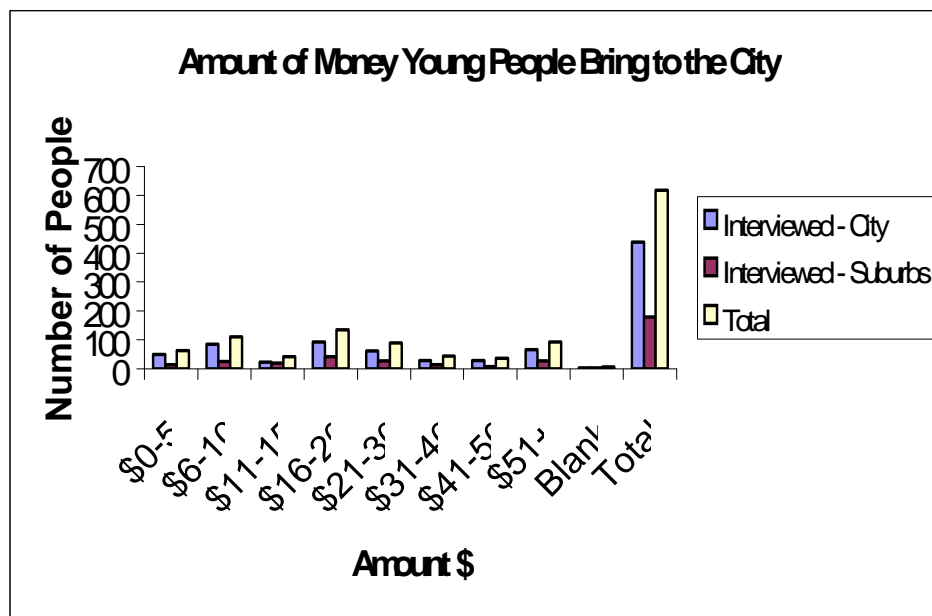
1.3.7.1. Amount of Money Young People Bring to the City

Planning for inner city youth facilities will need to take into consideration the number of young people with relatively small amounts of money to cover all needs (possibly including food, drinks, entertainment and transport) when visiting the City:

- 10% of young people in the City have \$5 or less;
- 28% have \$10 or less (and of this category 31% are under 15 years, 36% are 16-18 years; and 30% are 19-25 years, indicating that it is young people of all age groups who come to the City with relatively small amounts of money).

Again there were no significant differences between the two groups interviewed, as shown below:

Amount of Money Young People Bring to the City:



1.3.7.2. Spending on Food & Drink in the City

This question was aimed particularly at identifying the demand for a low priced food outlet at the proposed youth facility, and does indicate that a number of young people have little money available for food and drink (or perhaps are prepared to spend little for this purpose) :

- 34% of young people had \$5 or less to spend on food and drink;
- 71% had \$10 or less.

1.3.7.3. Spending on Entertainment Each Week (Not just in the City)

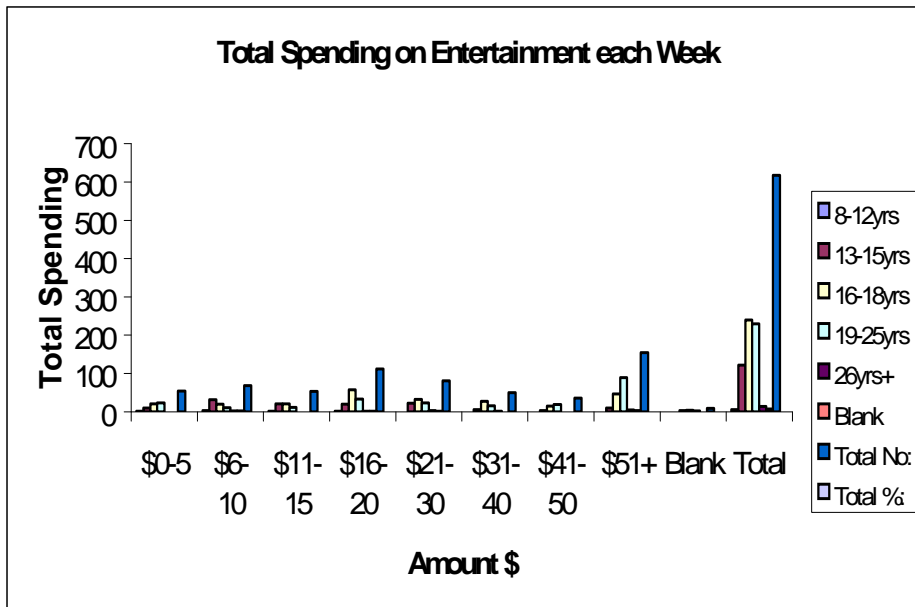
The data indicates that while there are a number of young people who would have the disposable income to pay for activities at a youth centre, mechanisms would need to be established to enable those with little to spend to be able to participate.²

- 47% of young people interviewed had \$20 or less to spend on entertainment each week. Of this group 30% are aged 8 -15 years, 40% are aged 16-18 and 26% are older than 19 years. This, linked to previous data, emphasises the need to cater for young people of all ages who frequently visit the City, stay long periods of time, but have a limited weekly income for entertainment.

Total spending on entertainment each week: (Total Population)

Again there is little difference between the two groups:

Total spending on entertainment each week: (Comparison)



² The Business Case for the Youth Facility includes mechanisms where young people can work or contribute skills and return gain credits for free participation in activities.

1.4. Young People's Views and Expectations of the City

The survey questions that provided information in relation to young people's views and expectations of the City were:

- Question 4: What attracts you to the City and/or Northbridge;
- Question 11: What are your top 3 issues/hassles with the City;
- Question 12: How can the City get young people to speak out about issues and concerns in the City;
- Question 13: Do you think any of the following will attract yourself or other young people [to speak out about issues and concerns in the City].³

The analysis of these questions is presented below, and covers all data collected both in the City and suburban locations:

1.4.1. The Reasons Young People Are Attracted to, or Come to, the City

Young people expressed their responses in their own words rather than responding to pre-determined groupings.

Two major categories emerged in relation to what attracts young people to the City:

1. **Entertainment** (including clubs, cafes, skating, movies, art/culture, exhibitions, concerns, pool halls). 370 responses were received for this category.
2. **Socialisation** (meeting friends and making friends). 249 responses were received for this category.

Other significant reasons for coming to the city were; work (59 responses); education (50 responses); shopping (48 responses).

These responses confirm that the City of Perth is a major attraction for young people as a place to seek entertainment and meet friends. This data becomes highly significant when linked to the analysis below of issues and concerns.

1.4.2. Issues & Concerns of Young People in Relation to the City

Four major categories emerged in terms of young people's issues and hassles with the City - Nothing to do, personal safety, lack of public open space amenable to youth, and transport. Each is outlined below:

1. **Nothing to do** (including lack of facilities, high cost of entertainment, lack of street entertainment, boredom). 261 responses were received for this category.
2. **Personal safety** (intimidating groups, beggars, violence, crime, drunks). 239 responses were received.
3. **Public open space amenable to young people** (included in this category were concerns about being "hassled" by police security guards and transit police; negative

³ Questions 12 and 13 were particularly focused towards the City of Perth's Youth Forum which was to be held shortly after this Street Intercept Survey.

attitudes of shopkeepers and other people in the City in relation to young people; and no place to meet and be with friends). 231 responses were received.

4. **Transport** (including poor frequency of transport, lack of transport later in the evening, lack of taxis, parking and traffic). 149 responses were received.

Together these concerns create the impression of a City not amenable, and even hostile to young people, and difficult to access.

1.4.3. Consulting Young People

Interviewees were asked: “How can the City get young people to speak out about issues and concerns in the City?”

The young people interviewed suggested the following:

Ways to Reach Youth	No. of Responses
Surveys	171 ⁴
Youth conference/forum	69
Ask the youth	51
Representation	25
Positive media	25
Suggestion boxes	15
Petitions	15
Youth venue	13
Paid survey	8
Camera interviews	6
Rallies/posters	6
Hotline	5
Mini festival	4
Council out on the street	3
Debates	3
Concerts	1
Interviews	1
Lower voting age	1

In addition, at the time of conducting the survey the City of Perth was planning to hold a youth forum and questions were also asked relating to the use of the following mechanisms to enable youth to express their views:

The suggested mechanisms were:

- Free youth concert including interviews and questionnaires
- Video interviews
- Internet chat room/website
- Incentives like vouchers for fast food or entertainment.

1.4.4. Conclusions in Relation to Young People’s Views and Expectations of the City

The data indicates that young people are no different to adults in being attracted to the city for reasons of socialisation and entertainment.

⁴ This response may have been influenced by young people feeling positive at the time about being asked to be involved in this Street Intercept Survey.

However, young people have expressed major concerns in being able to fulfil these needs because of lack of affordable and appropriate facilities, concerns for personal safety, a feeling of alienation or being made to feel unwelcome in the City, and transport inadequacies.

Nevertheless, the survey indicated that young people do wish to have input into the way their needs are met in relation to the City and they have expressed a range of ways in which they would like to be consulted.

1.5. Young People's Needs in Relation to Youth Facilities in the City

1.5.1. Preferred Activities at an Inner City Youth Facility

There were two components to this question:

- Ticking boxes against a suggested range of activities (multiple answers sought);
- Request to specify, in their own words, any other activities.⁵

The tick box categories were:

- Recording Studio
- Music Workshops
- Graffiti Art
- Publishing Facility
- Competitions [eg skateboarding]
- Internet Access
- Edit Suite
- Arts Workshops
- Skateboarding
- Climbing Wall
- Health Welfare Services
- Cheap Café
- Photography
- Concerts
- Dance/Movement

The responses indicate:

- A broad spectrum of interests across all young people covering high energy, music, arts, cultural and intellectual pursuits;
- Extremely high interest in concerts, a cheap café, skateboarding, graffiti art, arts workshops, a recording studio and photography, all typically identified with today's urban youth culture.

In analysing the above data it could have been expected that a higher percentage of those interviewed in the suburbs would have ticked skateboarding, since skateboarding venues were included in the locations. However, the data shows a fairly even interest, with 66% of those interviewed in the City wanting skateboarding facilities, compared with 63% of those interviewed in the suburbs. The question did not differentiate whether the young person would participate in, or be a spectator of skateboarding activities.

1.5.2. Frequency of Use for an Inner City Youth Facility

The most popular responses from the young people interviewed were that they would go to an inner city youth facility once a week, 2 - 3 times per week, or at weekends. There was little difference in the groups interviewed in the City and in the suburbs as shown in the following percentages of respondents to these three categories:

Once a Week 2-3 Times Per Week Weekends

⁵ It is acknowledged that some bias may have been introduced by asking the structured questions before the "in your own words" component.

Those interviewed in the City	24%	31%	19%
Those interviewed in the Suburbs	26%	26%	25%

The 13-15 year olds seem more likely to use the facility once a week, perhaps due to school commitments, as compared to the higher levels of usage of 16-18 year olds and 19-25 year olds.

From a gender perspective, the major difference in potential usage of an inner city youth facility is the indication that males are more likely to use the facility in the 2-3 times per week (which could include weekends). Females, in comparison are more likely to be use the facility at weekends.

1.5.3. Willingness to Contribute Time & Skills

The contact details of young people who wished to help in establishing, maintaining or operating a youth facility were requested. The results were:

- 110 young people expressed an interest in assisting in various aspects of the proposed youth facility.

1.6. Section 2 of the Survey: Young People's Preferences in Relation to Skateboarding, BMX & Inline Skating

Section 2 of the survey provided information in relation to those young people who were surveyed and are participants in skateboarding, BMX riding or inline skating. The aim of Section 2 was to understand the demand for these activities.

1.6.1. Number of Participants in Skateboarding, BMX, Inline Skating

The analysis shows that:

- 44% of the total number of young people interviewed (n = 617) for the survey are participants in these types of activities;
- 68% of young people in this activity group who were interviewed in the City stated they skateboarded (including those who also were involved in BMX and inline skating), compared to 71% of those interviewed in the suburbs. This indicates that the two populations have a similar interest in participating in skateboarding;
- From this activity group, inline skaters made up 26% of the City interviewees and 29% of suburban interviews, again showing consistency;
- There is a significant variance in the BMX data, with 27% of the City interviewees riding BMX bikes, and only 12% of those interviewed in the suburbs; (There is no verifiable reason for this difference, but the suburban locations used for interviews may have been a factor.)
- Of the total number interviewed who stated they participated in skateboarding, inline skating or BMX, 74% were male, and 26% female.
- For both the City and suburban interviewees in this activity group, the percentage of young people between 8 and 18 years of age who skateboard is 66% (and 67% for

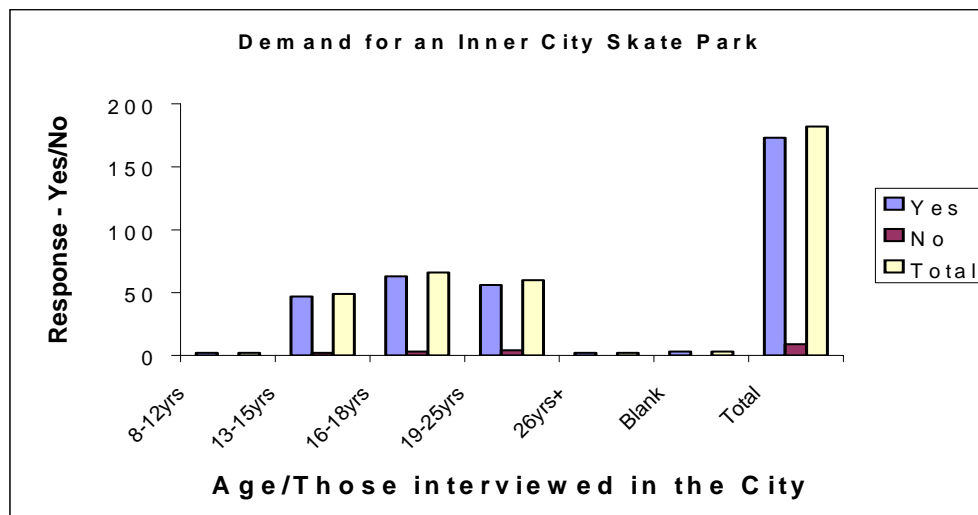
those between 8 and 15 years). This shows the degree of interest in participating in skateboarding in the target population for the proposed youth facility.

1.6.2. Demand for an Inner City Skate Park

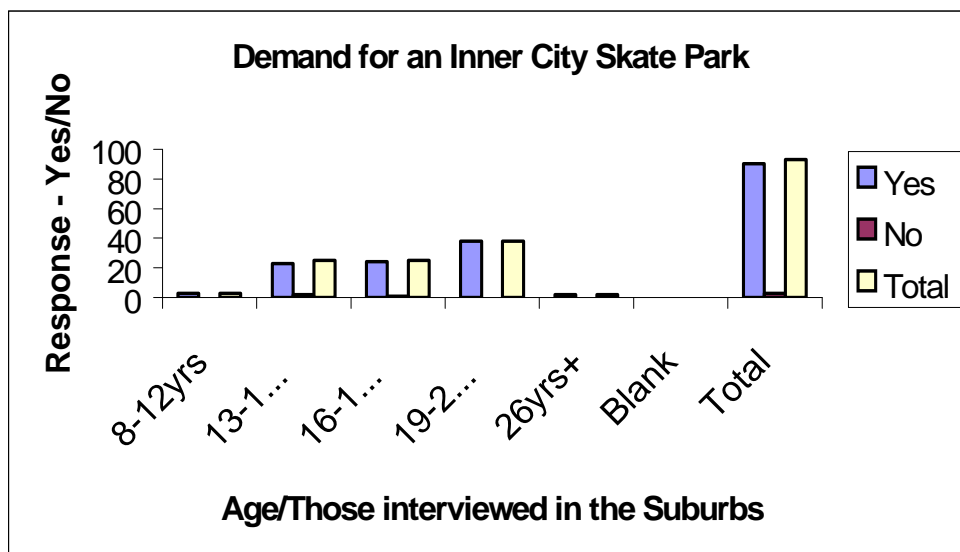
Of the young people who participated in Section 2 of the survey over 95% indicated that they would use an inner city skateboarding facility, with little difference between those interviewed in the City and those interviewed in the suburbs.

Demand for an Inner City Skate Park:

Those interviewed in the City:



Those interviewed in the Suburbs:

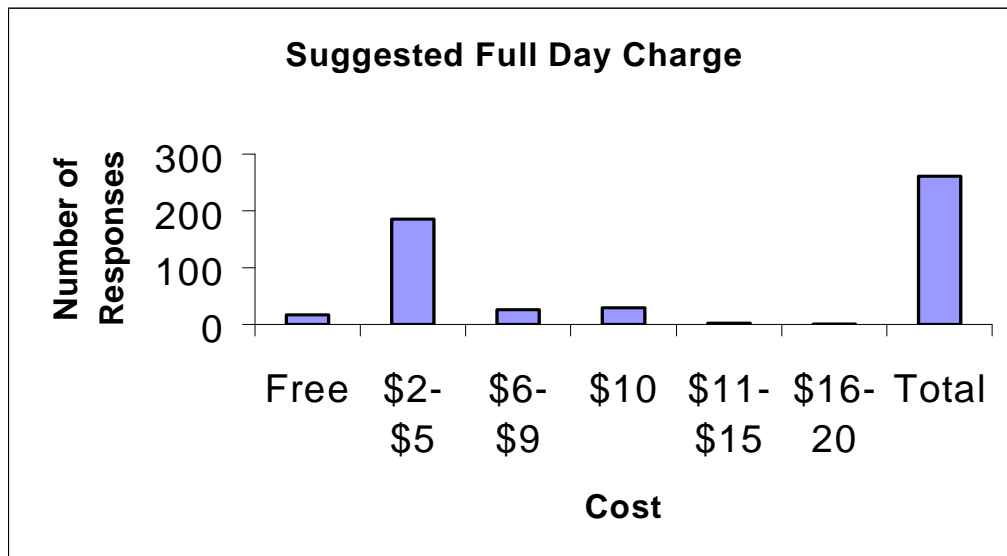


1.6.3. Preferred Time for Skating/Riding

46% of skateboarders have indicated that their preferred time for skating is in the afternoon, with 33% preferring the evening. There is no difference between the City and metropolitan data. The preference for afternoons corresponds well with the previous data which showed afternoons as the preferred time for visiting the City.

1.6.4 Charges for Inner City Skate Park (Affordability)

Suggested Full Day Charge⁶:



Of those participating in Section 2 of the survey, over 70% indicated that a fee in the range of \$2-\$5 would be most appropriate.

Data from Section 1 of the survey indicated that 46% of young people had less than \$20 to spend on entertainment each week, and that approximately half the young people who were interviewed came to the City 2 - 3 times per week. If it is assumed that young people may like to visit the youth facility on many of their visits to the City, then the implications are that charging around \$5 would be a feasible fee, depending on the amount of work/time young people contribute in order to earn credits for use of the facility (as part of the internal economy as described in the business case for the youth facility).

⁶ A full day charge has been used as a means of grouping the data on charges. However a scale of charges would apply for sessions and half day use of the skateboarding facility.

1.6.5. Skateboarding Accidents on Roads and Footpaths

One of the aims of the skateboarding component of the youth facility is to reduce the number of young people who are skateboarding throughout the City. Skateboarding in areas such as building forecourts causes damage to property and has led to some building owners hiring security guards to deter skateboarders. However, even more seriously, skating in places other than a dedicated facility often causes danger and death for the skateboarders because of collisions with motor vehicles. (It is not uncommon to see skateboarders attempting a high skill trick down the stairs or handrail of a City building and hurtling straight across the road into oncoming traffic.)

While it has not been possible to access data on skateboard deaths because official statistics have not been categorised in this way, the following information from the survey gives an indication of the number of skateboarders who have encountered dangerous situations or may have caused harm to others:

Total number of skateboarders interviewed who have been involved in accidents: 108

Details of types of accidents:

• Bike	1
• Board run over	4
• Dog	1
• Close calls	17
• Pushed by people	1
• Fallen	3
• Swerved to miss car & cracked skull	1
• Hit pedestrian	25
• Hit by car	41

1.7. Conclusions

This street intercept survey is the most comprehensive analysis which has been undertaken in order to gain an insight into today's youth, their relationship with their capital city, and their needs and expectations. The data will be valuable, not only for the business case for the proposed inner city youth facility, but for all organisations and decision-makers involved in meeting the needs of young people.

The major conclusions from the survey are:

Demographic Profile:

1. Young people travel to the City from across the metropolitan area, with only 7% of the young people interviewed in the City living in the City of Perth, Northbridge, East Perth or West Perth;
2. Approximately half the young people interviewed (in both the City and suburban locations) travel to the City 2 to 3 times per week. For both the group interviewed in the City and the group interviewed in the suburbs, 28% come to the City every day;
3. Saturday is the most popular day overall for visiting the City;
4. Afternoon (12 noon - 6pm) is the most popular time for visiting the City, followed by evening (6pm - 10pm);
5. 37% of young people interviewed under the age of 18 are spending more than an average of 4 hours in the City on each visit;

6. Most young people use public transport to travel to and from the City, with 44% travelling by train, 21% by bus, and 18% by bus and train;
7. 10% of young people bring less than \$5 with them when they visit the City, and 28% have less than \$10;
8. On average 33% of young people spend less than \$5 on food and drink when they come to the City, and 70% spend less than \$10;
9. 46% of young people have less than \$20 to spend on entertainment each week; 20% have less than \$10 for this purpose.

The picture which emerges is one of young people coming regularly to the City by public transport from all parts of the metropolitan area, staying for considerable periods of time, but in many cases with limited money to spend on food drink and entertainment.

Young People's Views on the City:

1. Of all the young people interviewed 60% stated that one of the reasons for coming to the City is for entertainment; 40% said to socialise with friends; 10% for work; 8% for education; and 8% for shopping.
2. Four major categories emerged in relation to young people's issues and concerns with the City:
 - Nothing to do (lack of facilities, cost of entertainment, boredom);
 - Personal safety (intimidating groups, fears for safety, violence);
 - Lack of public open space amenable to youth ("hassled" by police, security guards, transit police; negative attitudes of shopkeepers and other people in the City; no place to hang out);
 - Transport (inadequate public transport service, lack of taxis, parking problems);
3. Young people want to be consulted about their views in relation to the City and the most popular mechanisms suggested were surveys and a young conference or forum.

When considering the demographic profile together with the views of young people in relation to the City, the picture emerges of a City environment which is not welcoming to young people, and especially those who cannot afford to pay for entertainment at commercial venues. Yet despite these problems many young people continue to come to the City as a place to be with their friends and find entertainment. Young people appear to be concerned about the current situation and want to express their views.

Young People's Needs in Relation to a Large Youth Facility :

1. 73% of young people interviewed stated that they would like a cheap café, 73% requested concerts, 65% skateboarding, 62% graffiti art, 54% arts workshops, 54% a recording studio and 53% photographic facilities; plus a range of other areas of interest common to youth arts and culture; (Multiple answers were allowed.)
2. The most popular response in relation to frequency of use of an inner city youth facility were 2-3 times per week (28% of those interviewed), once each week (25%), and weekends (22%);
3. 13-15 year olds seem most likely to use the facility once a week, perhaps due to school commitments, as compared to the higher levels of usage of 16-18 year olds and 19-25 year olds;
4. 110 young people expressed an interest in assisting in various aspects of the proposed youth facility.

Therefore it appears that, given the opportunity of a youth facility covering a range of youth activities (high energy, arts and culture), young people would use the facility extensively and be prepared to contribute their time and skills to its development and operation.

Participants in Skateboarding, BMX & Inline Skating:

1. 44% of young people who participated in the survey were participants in skateboarding, BMX and inline skating;
2. In this group 70% of young people participated in skateboarding, 28% in inline skating and 20% in BMX;
3. 74% of males interviewed participated in these activities, in comparison to only 26% females;
4. Over 95% of this group of young people indicated that they would use an inner city skateboarding facility;
5. The preferred times for skateboarding were afternoon and evening;
6. Over 70% in this category indicated that a fee in the range of \$2-\$5 would be most appropriate for a full day charge for skateboarding;
7. 108 young people in this group indicated that they had been involved in an accident or “close call” involving pedestrians, motor vehicles, or dogs, as a result of skateboarding on roads and footpaths.

The popularity of skateboarding (together with inline skating and BMX), as a key component of urban youth culture for both participants and spectators, is demonstrated by 65% of young people interviewed wanting skateboarding facilities and 44% indicating that they are already involved in these activities. However, it is important to recognise that these activities appear to be much more attractive to males than females and other activities will need to be provided to make the youth facility popular with females.

From the perspective of affordability, the data indicates that a fee of approximately \$5 - \$8 would be appropriate for a full day’s skateboarding. This appears to be consistent with the amount of money young people have to spend on entertainment, as outlined above, given that many young people indicate that they would wish to participate in the skateboarding facilities several times per week.

The demand for such facilities is further highlighted by the number of accidents resulting from young people having few places to skate other than on roads and footpaths.

In conclusion, the street intercept survey indicates the opportunities for Western Australia in providing facilities for young people in the City of Perth and involving young people in the development and operation of such facilities. The outcomes will be to give young people a feeling of belonging in their capital city, reducing the problems which result from young people feeling alienated, bored and insecure, and enhancing young people’s sense of responsibility and citizenship.

SECTION 2: SURVEY DETAIL

2.1. Introduction

This section of the report provides the detailed data, which forms the basis of the summary provided in Section 1 above.

2.1.1 Background Information

In September 1996 members of the Rotary Club of Heirisson⁷ joined with members and mentors of the Skateboarding Association of Western Australia Inc. (SKAWA) with the aim of developing skateboarding facilities within the Perth City area. At that stage initial discussions were held with the Lotteries Commission of WA to investigate the potential of Lotteries funding for such a venture. Lotteries advised that a business case would need to be developed, incorporating a youth survey, and that an application for a Lotteries grant could be made to fund the development of the business case.

Discussions with Councillors and senior staff of the City of Perth in early 1997 extended the scope of the proposed facility from a skateboarding centre to an integrated youth facility focussing on a wide range of youth services, activities, arts and culture, as well as skateboarding. The following objectives were developed for the integrated youth facility, from three perspectives - Perth City, Youth, and Youth Services:

Objectives for Perth City⁸

- For the proposed Youth Facility to be an integral part of the vision for *Perth - A City for People*, contributing to the aim that our capital city should be "interesting, enjoyable and easily accessible, so that people are attracted to it for its services and facilities and its work, investment and leisure opportunities"⁹;
- For Perth to be recognised, locally, nationally and internationally, for its innovative approach to youth;
- To develop the Youth Facility in a location which is accessible by public transport.

Objectives for Youth

- For youth to take pride in Perth City;
- To achieve youth empowerment, sense of responsibility and citizenship by their involvement in the planning, development and operation of the proposed youth facility;
- To provide opportunities for mentoring - youth to youth; adults to youth;
- To reduce undesirable behaviours which impact negatively on young people themselves and other people within the City;
- To address specifically the needs of those young people who do not belong to more formal groups (*although it is not intended that the facility be exclusive to these young people*);
- To focus on developmental, non competitive activities.

Objectives for Youth Services

- To develop and implement models of best practice for the delivery of youth services;
- To enhance the coordination of youth services and activities, encompassing State and Local Government, not for profit, and voluntary groups working with youth;
- To provide a readily accessible, confidential and blended service to young people which can be approached without stigma.

In April 1997 it was decided to form a Reference Group to guide the development of the integrated youth facility. Membership of the Reference Group was drawn from

⁷ The Rotary Club of Heirisson meets in East Perth.

⁸ Perth City at this stage is loosely defined as the City Centre and Northbridge areas, thus involving two Local Authorities, the City of Perth and the Town of Vincent.

⁹ Central Area Policy Review, as quoted in the City of Perth draft brief for a Youth Strategy.

Councillors of the City of Perth and Town of Vincent, and senior personnel from State Government, City of Perth and community organisations.

With the support of the Reference Group an application was made to the Lotteries Commission by SKAWA in April 1997 for funding to develop a business case for an integrated youth facility. The business case was to include a youth survey. A Lotteries grant of \$6,000 was approved for this purpose on 8th May 1997. [In addition, the City of Perth agreed to contribute \\$4,000 towards the analysis of the survey results.](#)

While SKAWA members and mentors have played a key role in the survey they have taken the wider perspective of the requirements for an integrated youth facility, rather than a focus solely on skateboarding. The SKAWA members are also major contributors to the overall business case for the youth facility.

2.1.2. Survey Objectives

The initial aim of the survey was to determine demand for the proposed integrated youth facility. However, based on discussions with the City of Perth, the scope of the survey was expanded to include questions in relation to youth needs which the City wished to address, thus avoiding the need for the City of Perth to carry out its own youth survey in addition to that supported by the Reference Group.

Thus the survey objectives were to identify:

1. Demographic information about young people in the City of Perth and Northbridge (jointly referred to throughout this report as “the City”), including:
 - Age;
 - Gender;
 - The percentage of young people present in the City of Perth who live outside the City;
 - When young people come to the City;
 - How much time young people are spending in the City of Perth;
 - Methods of transport to and from the City;
 - Spending power of young people on food, drink and entertainment, including how much money young people bring to the City.
2. Young people’s views and expectations of the City, focusing on:
 - What attracts young people to the City;
 - Young people’s issues and concerns with the City;
 - Ways in which the City can keep in touch with the views and expectations of young people.
3. Young people’s needs in relation to youth facilities in the City, including:
 - Types of activities to be provided;
 - How often such facilities would be used;
 - Willingness of young people to invest skills or time to help develop and maintain such facilities¹⁰.

¹⁰ The survey was anonymous, and names and contact details for respondents to this question who wishes to give their skills or time were noted on a separate sheet of paper.

4. Specific needs and interests in relation to skateboarding, BMX and inline skating¹¹. (This formed Part 2 of the survey and is analysed separately.)

2.2 Research Method

2.2.1. Survey Design

The survey was designed to meet the objectives, as identified above, and to use language which would be readily understood by young people.

The initial survey design was developed by members and mentors of SKAWA. The survey format was then reviewed by Lotteries Commission and senior staff of the City of Perth, and revised based on their feedback.

The survey form is provided at Appendix 2.

The personally administered survey was chosen because it was considered that this approach would achieve:

- The highest response rate;
- The greatest reliability in interpretation of responses.

To further enhance the reliability of the data in relation to the objectives of the survey, it was also decided that the research method would have the following characteristics:

- A street intercept survey would be used, where young people present in the City area would be asked to complete the survey;
- The survey would be administered by young people, in order to achieve rapport with, and the confidence of, the young people being interviewed;
- The anonymity of the respondents would be maintained.

2.2.2 Data Collection: Location

Two types of locations were used:

1. The City (the major focus of the survey);
2. Suburban locations related to BMX or skateboarding (a minor focus of the survey), to gain an indication of potential usage of City skateboarding and BMX facilities by young people outside the City in order to develop the business case for the youth facility. Also included in the suburban locations' data are the results of a focus group session held in Fremantle where young people attended a gig and were given the opportunity by SKAWA interviewers to fill the questionnaire (section 2) and provide ideas for activities for inclusion in the business case.

[Inclusion in the survey of young people in suburban locations enhanced the research method and increased the validity of the survey results by introducing a mechanisms to compare the behaviours and expectations of those interviewed in the inner city with those interviewed in the suburbs.](#) Throughout this report each element of the analysis states whether the results represents the total data collected, or each of the individual locations as shown above.

Deleted: ¶

a) City Locations

¹¹ Inline skating is also known as roller blading.

The choice of locations within the City was based on places where numbers of young people tend to be present. Major locations were:

- The City train station, including platforms and concourse areas;
- Forrest Chase;
- Cultural Centre area;
- Wellington Street bus station;
- Hay Street mall;
- Murray Street mall;
- Shopping arcades;
- Northbridge;
- McDonalds fast food outlet, Hay Street.

b) Suburban Locations: BMX and Skateboarding

Locations used were:

- BMX shop, North Perth;
- Skateboarding shop, Claremont;
- Areas used by skateboarders in Fremantle, and especially the Woolstores shopping centre car park;
- Other known skateboarding locations throughout the metropolitan area;
- A Fremantle focus group session linked to a youth gig organised by SKAWA.

2.2.3. Data Collection: Timing

The survey was administered over a one week period from 25th July to 3rd August 1997. For the major part of the survey, which focused on the City, the aim was to give the perspective of a typical week in the City. The week did not coincide with school holidays and there was no major youth event in the City that week which could be expected to skew the survey data.

Interviewers noted the times the survey was administered in four slots:

- Morning (6 am - 12 noon)
- Afternoon (12 noon - 6 pm)
- Evening (6 pm - 10 pm)
- Night (10 pm - 6 am)

The time required to complete the survey was approximately 10 minutes.

2.2.4. Interviewers

The interviewers administering the survey were members or associates of SKAWA.

There were 8 interviewers, 5 male and 3 female, in the age group 19 to 24 years.

All interviewers were specially trained in administering the survey, to encourage young people to participate, to achieve consistency of interpretation, and to avoid bias. The training session lasted 3 hours and covered:

- Role plays;
- Inclusion of youth language in the survey;
- Avoiding leading questions;
- Identifying target groups;
- Methods of approaching groups and isolating one or two individuals for the survey, to avoid group bias.

In addition a meeting of interviewers was held half way through the survey week to discuss any problems or difficulties. Feedback indicated some bias to an older age group and interviewers were directed to concentrate on younger age groups.

On completion of the survey the interviewers confirmed that they had attempted to interview a wide cross section of young people, and not to give preference to any age, gender, nationality or sub culture. However, some, but not all, interviewers did report that they had had a tendency to feel hesitant about approaching larger groups of young people, Aboriginal males, Asian young people (because of potential language difficulties);

The interviewers were paid for the time involved in administering the survey in recognition of the principle of empowerment and the significant effort they were contributing to the development of the business case.

2.3. Survey Population

2.3.1. City Survey

438 young people were interviewed, 217 female and 218 male (plus 3 where the “gender” question was not answered).

The aim was to approach any young person who appeared to be in the age group 12 to 25 including school students.

However, people stopped who turned out to be outside this age bracket were still given the opportunity to participate, resulting in an actual age distribution as follows:

City Survey:

Age (Years)	Female	Male	Total
8	0	1	1
12	0	1	1
13	5	7	112
14	9	12	21
15	31	19	50
16	36	23	59
17	29	24	53
18	33	27	60
19	20	12	32
20	15	23	38
21	8	24	32
22	8	8	16
23	9	8	17
24	3	10	13
25	4	10	14
26	2	3	5
27	2	1	3
30	0	1	1
36	0	1	1
blank	2	3	5
Grand Total	217	218	438

2.3.2. Suburban Survey: BMX & Skateboarding

179 young people were interviewed.

Young people approached were those who appeared to be interested in, or were currently involved in, BMX and skateboarding activities.

Suburban Survey:

Age (Years)	Female	Male	Total
9	0	1	1
10	1	0	1
12	1	1	2
13	2	3	5
14	6	13	19
15	8	6	14
16	13	16	29
17	13	9	22
18	7	10	17
19	7	11	19
20	4	7	11
21	3	6	9
22	5	7	12
23	2	5	7
24	0	2	2
25	0	5	5
26	0	1	1
27	0	1	1
28	1	0	1
Blank			1
Totals	73	104	179

2.4. Survey Data

Analysis criteria were determined by those Reference Group members working on the survey and senior staff of the City of Perth.

2.4.1. Demographic Information about the Young People Interviewed

2.4.1.1. Home Address

Analysis of Survey Population by Home Address:

Home Address: By Area	Home Address: By Suburb	Interviewed in the City	Interviewed in the Suburbs	Total: By Suburb	Total: By Area
Perth City	Perth, 6000	12	3	15	
	Northbridge, 6003	10	2	12	
	East Perth, 6004	9	1	10	
	West Perth, 6005	5	1	6	
Totals		36	7		43
Near City	Mt Lawley, 6050	23	5	28	
	North Perth, 6006	6	1	7	
	Leederville, 6007	7	0	7	
	Subiaco, 6008	17	9	26	
	Victoria Park, 6100	8	1	9	
	Carlisle, 6101	9	1	10	
Totals		70	17		87
Eastern Suburbs	Rivervale, 6103	1	1	2	
	Maylands, 6051	4	2	6	
	Bayswater, 6053	3	2	5	
	Redcliffe, Belmont 6104	1	2	3	
	Cloverdale, 6105	1	0	1	
	Welshpool, 6106	0	1	1	
	High Wycombe, 6057	4	1	5	
	Forrestfield, 6058	3	3	6	
	Helena Valley, 6056	3	5	8	
	Kalamunda, 6076	3	1	4	
	Glen Forrest, 6071	1	0	1	
	Mundaring, 6073	0	1	1	
	Gosnells, 6110	5	1	6	
	Maddington, 6109	1	1	2	
	Canning Mills, 6111	4	0	4	
	Armadale, 6112	7	2	9	
	West Swan, 6055	3	0	3	
	Chidlow, 6556	0	1	1	
	Eden Hill, 6054	4	2	6	
	Mt Helena, 6082	1	0	1	
Sawyers Valley, 6074	2	0	2		
Mahogany Creek, 6072	1	0	1		
Byford, 6201	0	1	1		
Darlington, 6070	2	1	3		
Totals		54	28		82
Western Suburbs	Floreat, 6014	4	2	6	
	City Beach, 6015	4	1	5	
	Wembley Downs, 6019	11	3	14	
	Mt Claremont, 6010	12	6	18	
	Nedlands, 6009	9	4	13	
	Cottesloe, 6011	5	10	15	
	Doubleview, 6018	12	4	16	
	Mosman Park, 6012	7	2	9	
Totals		64	32		96

Analysis of Survey Population by Home Address (cont.):

Southern Suburbs	South Perth, 6151	7	5	12	
	Como, 6152	5	1	6	
	Alfred Cove, 6154	0	4	4	
	Attadale, 6156	2	1	3	
	Rossmoyne, 6148	2	2	4	
	Bull Creek, 6149	3	0	3	
	Bateman, 6150	5	1	6	
	Thornlie, 6108	6	0	6	
	Kenwick, 6107	6	1	7	
	Jandakot, 6164	1	2	3	
	Willetton, 6155	2	0	2	
	Lynwood, 6147	2	2	4	
	Bentley, 6102	1	1	2	
	Applecross, 6153	3	3	6	
Totals		45	23		68
Fremantle & Sth	Fremantle, 6160	7	4	11	
	East Fremantle, 6158	3	2	5	
	White Gum Vly, 6162	4	0	4	
	Palmyra, 6157	1	6	7	
	O'Connor, 6163	5	6	11	
	Munster, 6166	0	3	3	
	Kwinana Beach, 6167	1	2	3	
	Shoalwater, 6169	2	2	4	
Totals		23	25		48
Northern Suburbs	Carine, 6020	8	1	9	
	Greenwood, 6024	3	3	6	
	Duncraig, 6023	7	1	8	
	Kingsley, 6026	10	2	12	
	Craigie, 6025	5	4	9	
	Mullaloo, 6027	19	0	19	
	Kinross, 6028	2	0	2	
	Clarkson, 6030	4	2	6	
	Mt Hawthorn, 6016	8	1	9	
	Osborne Park, 6017	3	0	3	
	Yokine, 6060	12	2	14	
	Dianella, 6062, 6059	12	4	16	
	Inglewood, 6052	5	4	9	
	Stirling, 6021	2	1	3	
	Balga, 6061	5	1	6	
	Hammersley, 6022	2	0	2	
	Girrawheen, 6064	8	2	10	
	Lansdale, 6065	4	0	4	
	Ballajura, 6066	1	1	2	
	Beechboro, 6063	3	2	5	
Totals		123	31		154
Country	Nth Dardalup, 6207	1	0	1	
	Dwellingup, 6213	1	0	1	
	Bunbury, 6230	1	1	2	
	Albany, 6330	1	2	3	
	Denmark, 6333	1	0	1	
	Kellerberrin, 6410	1	0	1	
	Esperance, 6450	1	0	1	
	Geraldton, 6530	1	0	1	
Totals		8	3		11
Blank/ Incorrect		15	13		28
Grand Total		424	160		617

2.4.1.2. Frequency of Visiting the City

(Question 2: If you do not live in the City, how often on average do you come to the City and/or Northbridge)

Frequency of Visiting the City (Those Interviewed in the City)

Age Group	Occasion-ally	Every Couple of weeks	Once a week	On Week-ends	2-3 Times a week	Daily	Blank	Total
8-12yrs	0	1	1	0	0	0	0	2
13-15yrs	10	12	17	15	14	14	1	83
16-18yrs	15	14	27	24	41	49	2	172
19-25yrs	13	5	22	4	62	55	3	164
26yrs+	1	2	1	0	2	5	0	11
Blank	1	0	1	0	3	1	0	6
Total No.	40	34	69	43	122	124	6	438
Total %	9%	8%	16%	10%	28%	28%		

Frequency of Visiting the City (Those Interviewed in the Suburbs)

Age Group	Occasion-ally	Every Couple of weeks	Once a week	On Week-ends	2-3 Times a week	Daily	Blank	Total
8-12yrs	2	1	0	0	1	0	0	2
13-15yrs	5	7	12	7	4	3	0	38
16-18yrs	7	7	11	10	10	22	1	68
19-25yrs	7	4	13	2	13	25	1	65
26yrs+	0	1	1	0	1	0	0	3
Blank	0	0	1	0	0	0	0	1
Total No:	21	20	38	19	29	50	2	179
Total %:	12%	11%	21%	11%	16%	28%		

2.4.1.3. Usual Days for Visiting the City

(Question 8: What days would you normally come to the City and/or Northbridge?)

% of the group who visit the City, analysed by day of the week:

Group	Monday	Tuesday	Wednes day	Thursday	Friday	Saturday	Sunday
City Group	37%	36%	45%	43%	68%	79%	58%
Suburban Group	33%	31%	36%	38%	60%	83%	53%

The above data was also analysed by gender, to determine the percentage of the males and females in each of the two groups who visit the City on particular days of the week.

% of the group who visit the City, analysed by day of the week and gender:

Group	Monday		Tuesday		Wednesday		Thursday		Friday		Saturday		Sunday	
	F	M	F	M	F	M	F	M	F	M	F	M	F	M
City Group	33%	40%	32%	40%	44%	46%	39%	46%	71%	65%	77%	81%	56%	61%
Suburban Group	32%	33%	31%	30%	33%	38%	34%	40%	53%	65%	78%	84%	42%	61%

2.4.1.4 Time of Day for Visiting the City

(Question 9: What time of day would you usually be in the City and/or Northbridge?)

Young people interviewed were asked to indicate whether they would usually be in the City:

- Morning (6-12am)
- Afternoon (12-6pm)
- Evening (6-10pm)
- Night (10-6am)

The data is analysed by age group.

Note: Some respondents completed more than one category.

Time of day usually visit the City (Those Interviewed in the City)

Age Group	Morning 6-12am	Afternoon 12-6pm	Evening 6-10pm	Night 10pm-6am
8-12yrs	1	0	1	0
13-15yrs	29	73	26	12
16-18yrs	43	127	67	39
19-25yrs	49	112	80	65
26yrs+	3	8	4	2
Blank	1	6	2	2
Total	126	326	180	120

Time of day usually visit the City (Those Interviewed in the Suburbs)

Age Group	Morning 6-12am	Afternoon 12-6pm	Evening 6-10pm	Night 10pm-6am
8-12yrs	0	4	0	0
13-15yrs	9	30	7	1
16-18yrs	22	58	21	12
19-25yrs	23	53	29	21
26yrs+	0	2	2	1
Blank	0	1	0	0
Total	54	148	59	35

The data was also analysed by gender, and there were no significant differences in times of visiting the City between males and females.

2.4.1.5. Time Spent in the City

(Question 6: On average how long do you spend in the City and/or Northbridge?)

Time Spent in the City (Total Population)

Age	Less than 1 hr	1-2 hrs	2-3 hrs	3-4 hrs	4-6 hrs	6-8 hrs	More	Blank	Total
8-12yrs	0	1	2	2	1	0	0	0	6
13-15 yrs	2	13	34	28	23	15	6	0	121
16-18 yrs	5	27	55	60	45	42	5	1	240
19-25 yrs	7	36	50	48	40	43	5	0	229
26yrs +	0	3	4	1	4	2	0	0	14
Blank	0	2	2	0	2	0	1	0	7
Total No.	14	82	147	139	115	102	17	1	617
Total %	2%	13%	24%	23%	19%	16%	3%		

Time Spent in the City (Those Interviewed in the City)

Age	Less than 1 hr	1-2 hrs	2-3 hrs	3-4 hrs	4-6 hrs	6-8 hrs	More	Blank	Total
8-12yrs	0	3	3	0	1	0	1	0	8
13-15 yrs	2	9	21	19	16	10	6	0	83
16-18 yrs	5	22	30	45	33	32	4	1	173
19-25 yrs	5	27	39	30	28	31	4	0	163
26yrs +	0	2	3	1	3	2	0	0	11
Blank	0	0	0	0	0	0	0	0	0
Total No.	12	63	96	95	81	75	15	1	438
Total %	3%	14%	22%	22%	18%	17%	3%		

Time Spent in the City (Those Interviewed in the Suburbs)

Age	Less than 1 hr	1-2 hrs	2-3 hrs	3-4 hrs	4-6 hrs	6-8 hrs	More	Blank	Total
8-12yrs	0	0	1	2	2	0	0	0	5
13-15 yrs	0	4	13	9	7	5	0	0	38
16-18 yrs	0	5	25	15	12	10	1	0	68
19-25 yrs	2	9	11	18	12	12	1	0	65
26yrs +	0	1	1	0	1	0	0	0	3
Blank	0	0	0	0	0	0	0	0	0
Total No.	2	19	51	44	34	27	2	0	179
Total %	1%	11%	28%	25%	19%	15%	1%		

2.4.1.6. Transport to the City

(Question 3: How do you get here?)

Note: In a small number of instances the categories Bus, Train, Bus & Train, and Private were combined with other means of transport (including skating).

Age	Bike	Bus	Train	Bus & Train	Private	Skate	Walk	Blank	Total
8-12yrs	0	0	3	1	2	0	0	0	6
13-15 yrs	0	22	58	30	7	0	1	3	121
16-18 yrs	1	55	115	50	17	0	0	2	240
19-25 yrs	3	49	88	28	44	2	13	2	229
26yrs +	0	1	6	0	4	0	3	0	14
Blank	0	4	1	2	0	0	0	0	7
Total	4	131	271	111	70	2	17	7	617

2.4.1.7. Spending Power

Three questions related to the financial situation of young people:

- How much \$ on average do you bring with you to the City?
- How much do you spend on food/drink when you come to the City/Northbridge?
- How much can you afford to spend on entertainment each week?

2.4.1.8. Amount of Money Young People Bring to the City

(Question 5: How much \$ on average do you bring with you?)

Amount of Money Young People Bring to the City:

Age	\$0-5	\$06-10	\$11-15	\$16-20	\$21-30	\$31-40	\$41-50	\$51+	Credit Card - No Cash	Blank	Total
8-12 yrs	0	2	3	0	0	1	0	0	0	0	6
13-15 yrs	16	36	14	18	21	3	6	7	0	0	121
16-18 yrs	25	38	15	59	34	18	10	37	1	3	240
19-25 yrs	21	32	10	53	30	19	19	44	0	1	229
26 yrs +	1	2	0	1	3	0	1	5	0	1	14
Blank	0	1	0	3	1	2	0	0	0	0	7
Total No.:	63	111	42	134	89	43	36	93	1	5	617
Total %:	10%	18%	7%	22%	14%	7%	6%	15%	0.2%	0.8%	

Amount of Money Young People Bring to the City: (Comparison)

	\$0-5	\$06-10	\$11-15	\$16-20	\$21-30	\$31-40	\$41-50	\$51+	Blank	Total
Those Interviewed in the City	50 (11%)	85 (19%)	23 (5%)	92 (21%)	62 (14%)	29 (7%)	28 (6%)	66 (15%)	3	438
Interviewed in the Suburbs	13 (7%)	26 (15%)	19 (11%)	42 (23%)	27 (15%)	14 (8%)	8 (4%)	27 (15%)	3	179
Total:	63	111	42	134	89	43	36	93	6	617

2.4.1.9. Spending on Food & Drink in the City

(Question 14: How much do you spend on food/drink when you come to the City/Northbridge?)

Amount of Money Spent on Food & Drink on Each Visit to the City: (Total Population)

Age	\$0-5	\$06-10	\$11-15	\$16-20	\$21-30	\$31-40	\$41-50	\$51+	Blank	Total
8-12 yrs	3	3	0	0	0	0	0	0	0	6
13-15 yrs	62	42	11	4	2	0	0	0	0	121
16-18 yrs	81	91	26	24	2	0	2	9	4	240
19-25 yrs	56	88	20	22	14	1	4	15	3	229
26 yrs +	2	5	3	3	0	7	1	0	0	14
Blank	4	0	0	0	1	0	0	2	0	7
Total No.:	208	229	60	53	19	8	7	26	7	617
Total %:	34%	37%	10%	9%	3%	1%	1%	4%	1%	

Amount of Money Spent on Food & Drink on Each Visit to the City: (Comparison)

	\$0-5	\$06-10	\$11-15	\$16-20	\$21-30	\$31-40	\$41-50	\$51+	Blank	Total
Those Interviewed in the City	149 (34%)	159 (36%)	38 (9%)	40 (9%)	15 (3%)	5 (1%)	6 (1%)	21 (5%)	5	438
Interviewed in the Suburbs	59 (33%)	70 (39%)	22 (12%)	13 (7%)	4 (2%)	3 (2%)	1 (.5%)	5 (3%)	2	179
Total:	208	229	60	53	19	8	7	26	7	617

2.4.1.10. Spending on Entertainment Each Week (Not just in the City)

(Question 15: How much can you afford to spend on entertainment each week?)

Total spending on entertainment each week: (Total Population)

Age	\$0-5	\$06-10	\$11-15	\$16-20	\$21-30	\$31-40	\$41-50	\$51+	Blank	Total
8-12 yrs	1	3	1	1	0	0	0	0	0	6
13-15 yrs	10	31	20	19	22	6	3	10	0	121
16-18 yrs	20	19	20	57	32	27	15	47	3	240
19-25 yrs	23	11	12	33	23	16	18	89	4	229
26 yrs +	0	2	0	1	3	1	0	5	2	14
Blank	0	2	0	1	1	0	0	3	0	7
Total No.:	54	68	53	112	81	50	36	154	9	617
Total %:	9%	11%	9%	18%	13%	8%	6%	25%		

Total spending on entertainment each week: (Comparison)

	\$0-5	\$06-10	\$11-15	\$16-20	\$21-30	\$31-40	\$41-50	\$51+	Blank	Total
Those Interviewed in the City	35 (8%)	42 (10%)	33 (8%)	85 (19%)	61 (14%)	33 (8%)	26 (6%)	116 (26%)	7	438
Interviewed in the Suburbs	19 (11%)	26 (15%)	20 (11%)	27 (15%)	20 (11%)	17 (9%)	10 (6%)	38 (21%)	2	179
Total:	54	68	53	112	81	50	36	154	9	617

2.5. Young People's Views and Expectations of the City

The survey questions which provided information in relation to young people's views and expectations of the City were:

- Question 4: What attracts you to the City and/or Northbridge;
- Question 11: What are your top 3 issues/hassles with the City;
- Question 12: How can the City get young people to speak out about issues and concerns in the City;
- Question 13: Do you think any of the following will attract yourself or other young people [to speak out about issues and concerns in the City].¹²

The analysis of these questions is presented below, and covers all data collected both in the City and suburban locations:

Note: The numbers add to more than 100% as multiple answers were requested.

2.5.1. The Reasons Young People Are Attracted to, or Come to, the City

(Question 4: What attracts you to the City and/or Northbridge?)

¹² Questions 12 and 13 were particularly focused towards the City of Perth's Youth Forum which was to be held shortly after this Street Intercept Survey.

Two major categories emerged in relation to what attracts young people to the City. These were entertainment and socialisation as shown below:

Reasons for Coming to the City. Total interviewed = 617)

Category	Reason Given	Number of Responses
ENTERTAINMENT	Clubs	83
	Entertainment ¹³	73
	Skating	69
	Cafes	60
	Movies	28
	Art/Culture/Exhibitions	36
	Concerts	17
	Pool Halls	4
	Total: 370	

(Reasons for Coming to the City. Total interviewed = 617)

Category	Reason Given	Number of Responses
SOCIALISATION	Meet friends	93
	Make friends ¹⁴	53
	Social reasons	54
	Hang out ¹⁵	49
		Total: 249

Beyond the two major categories above, the other reasons given for being attracted to the City were:

Reason:	No. of Responses
Work	59
Education (incl. Library and TAFE)	50
Shopping	48
In transit	25
Drugs	7

¹³ No other details given to specify type of entertainment.

¹⁴ Make friends, includes "find a boyfriend, find a girlfriend".

¹⁵ Hang out: To relax with friends without participating in any specific activity.

2.5.2. Issues & Concerns of Young People in Relation to the City

(Question 11: What are your top 3 issues/hassles with the City?)

Four major categories emerged in terms of young people's issues and concerns with the City - Nothing to do, Personal safety, Lack of public open space amenable to youth, and transport. Each is outlined below:

Category	Reason Given	Number of Responses
NOTHING TO DO	Lack of facilities	78
	Nothing to do	77
	Cost of entertainment	45
	Lack of street entertainment, buskers, culture, art, graffiti art	44
	Boredom	17
		Total: 261

Specific comments made relating to the category "Nothing to Do" were:

- More festivals;
- Indigenous people have no place to go;
- More hip hop music;
- No basketball courts;
- The City should be open longer;
- Nothing to do unless you've got lots of \$s;
- Need more City activities - less "Brady Bunch" activities.

Category	Reason Given	Number of Responses
PERSONAL SAFETY	Intimidating groups	81
	Safety	61
	Beggars	43
	Violence	27
	Crime	14
	Drunks	13
		Total: 239

Specific comments in relation to personal safety were:

- Lighting.

Category	Reason Given	Number of Responses
PUBLIC OPEN SPACE AMENABLE TO YOUTH	Hassled by Police, Security Guards, Transit Police	135
	Negative attitudes of shopkeepers and other people in the City in relation to young people	59
	No place to hang out	35
	Youth space	2
		Total: 231

Specific comments in relation to public open space amenable to youth were:

- Seats removed in Murray Street;
- Security guards man-handle;
- Racist police;
- Public perception of youth/skaters;
- Alienated;
- Cafes with outdoor settings in business area;
- Cameras are offensive and intrusive.

Category	Reason Given	Number of Responses
TRANSPORT	Transport generally (including lack of taxis)	51
	Transports stops too early in the evening	42
	Poor frequency of transport	25
	Parking	16
	Traffic	15
Total:		149

Specific comments in relation to transport were:

- More focus on promoting public transport;
- Distance between train station and buses;
- Difficulty in accessing the City by us.

Beyond these four major categories, other responses to the question about issues and concerns with the City were:

Reason:	No. of Responses
Skateboarding is illegal	66
Drugs (Primarily Heroin)	36
Too crowded	19
Appearance of the City:	
Rubbish, lack of bins, pollution	16
Bad graffiti	2
Curfew:	
For	10
Against	2
Racism	7
Not enough street signs	5
Approaches by religious people/groups	4
Northbridge Tunnel	3
Banks not open; no EFTPOS	3
Few late night cafes	2
Need for integration: Northbridge/City	2
Approaches by buskers	2
Too much advertising	2
Dogs should be allowed	1
Not enough phones	1
Gambling	1

2.5.3. Consulting Young People

(Question 12: How can the City get young people to speak out about issues and concerns in the City?)

Those young people interviewed suggested the following ways for young people to speak out about their views in relation to the City:

Ways to Reach Youth	No. of Responses
Surveys	171 ¹⁶
Youth conference/forum	69
Ask the youth	51
Representation	25
Positive media	25
Suggestion boxes	15
Petitions	15
Youth venue	13
Paid survey	8
Camera interviews	6
Rallies/posters	6
Hotline	5
Mini festival	4
Council out on the street	3
Debates	3
Concerts	1
Interviews	1
Lower voting age	1

In addition, at the time of conducting the survey the City of Perth was planning to hold a youth forum and questions were also asked relating to the use of the following mechanisms to enable youth to express their views:

(Question 13: Do you think any of the following will attract yourself or other young people [to speak out at a youth forum]?)

The suggested mechanisms were:

- Free youth concert including interviews and questionnaires
- Video interviews
- Internet chat room/website
- Incentives like vouchers for fast food or entertainment.

Responses received are shown below, with the table representing total data from the two groups interviewed. Multiple responses were sought:

¹⁶ This response may have been influenced by young people feeling positive at the time about being asked to be involved in this Street Intercept Survey.

Mechanisms to use at attract young people to participate in a youth forum:

Age Group	Free Youth Concert	Video Interviews	Internet Chat Room/Website	Incentives eg Vouchers for Fast Food or Entertainment	Total
8-12yrs	6	2	2	6	6
13-15yrs	97	41	54	100	121
16-18yrs	184	80	123	177	240
19-25yrs	183	73	116	163	229
26yrs+	9	7	7	9	14
Blank	6	2	3	5	7
Total	485	205	305	460	617

2.6 Young People’s Needs in Relation to Youth Facilities in the City

2.6.1. Preferred Activities at an Inner City Youth Facility

(Question 16: What activities would you like to see in a large youth facility?)

There were two components to this question:

- Ticking boxes against a suggested range of activities (multiple answers sought);
- Request to specify, in their own words, any other activities.¹⁷

The tick box categories were:

- Recording Studio
- Music Workshops
- Graffiti Art
- Publishing Facility
- Competitions *[eg skateboarding]*
- Internet Access
- Edit Suite
- Arts Workshops
- Skateboarding
- Climbing Wall
- Health Welfare Services
- Cheap Café
- Photography
- Concerts
- Dance/Movement

The data is presented for each group interviewed:

¹⁷ It is acknowledged that some bias may have been introduced by asking the structured questions before the “in your own words” component.

Those interviewed in the City: (Total interviewed = 438)

Age	skate-bding	record-ing studio	music work shops	graff-iti. Art	pub-lishing	comp-etition	Inter-net	edit suite	arts work shop s	climb-ing wall	health & wel-fare	cheap café	photog-raphy	Con-certs	dance
8-12 yrs	2	0	1	1	1	2	1	1	2	1	1	1	1	2	1
13-15 yrs	54	39	40	51	14	37	33	21	37	38	17	59	42	65	33
16-18 yrs	103	85	99	108	35	62	78	54	89	59	45	116	86	133	87
19-25 yrs	121	103	114	114	79	87	92	79	109	88	86	124	113	118	101
26 yrs +	10	10	10	8	8	6	8	4	10	10	8	8	8	8	7
Blank	2	1	2	3	2	2	1	1	3	0	0	2	3	4	3
Total:	292	238	266	285	139	196	213	160	250	196	157	310	253	330	232

Those interviewed in the Suburbs: (Total interviewed = 179)

Age	skate-bding	record-ing studio	music work shops	graff-iti. Art	pub-lishing	comp-etition	Inter-net	edit suite	arts work shop s	climb-ing wall	health & wel-fare	cheap café	photog-raphy	Con-certs	dance
8-12 yrs	3	2	2	2	0	2	1	1	2	2	0	2	1	3	2
13-15 yrs	28	20	17	22	11	20	11	17	15	19	9	23	14	32	13
16-18 yrs	35	30	32	33	12	26	27	13	23	26	14	40	24	41	33
19-25 yrs	45	40	39	41	26	30	32	23	41	29	22	40	35	43	32
26 yrs +	2	2	2	2	3	2	1	3	2	3	2	3	2	3	1
Blank	0	0	0	0	0	0	0	0	0	0	0	1	0	1	0
Total:	113	94	92	100	52	80	72	57	83	79	47	109	76	123	81

Overall Totals: (Total interviewed - City = 438; Total interviewed - Suburbs = 179)

Age	skate-bding	record-ing studio	music work shops	graff-iti. Art	pub-lishing	comp-etition	Inter-net	edit suite	arts work shop s	climb-ing wall	health & wel-fare	cheap café	photog-raphy	Con-certs	dance
City	292	238	266	285	139	196	213	160	250	196	157	310	253	330	232
Suburb	113	94	92	100	52	80	72	57	83	79	47	109	76	123	81
Grand Total	405	332	358	385	191	276	285	217	333	275	204	419	329	453	313

In the second part of this question, where young people were asked to add any further ideas for activities at the proposed youth facility, the following suggestions were made:

Suggested Activity:	Responses
Drop in Centre	17
Basketball	15
Gallery/Exhibition	11
BMX Track	11
Alternative Sports	11
Workshops	9
Underage Club	8
Services	7
Alternative Education	5
Mini Golf	5
Foam Pit	5
Pool Tables	5
Events	5
Movies	5
Cheap Toilets	4
Circus Workshops	3
Inline Skating	4
Taggers' Wall	2
Boxing	2
Abseiling	2
Gym	2
Role Models	1
Alternative Clothing	1
Bookshop	1
Cooking	1

2.6.2. Frequency of Use for an Inner City Youth Facility

(Question 17: How often would you go to this type of facility?)

The most popular responses from the young people interviewed were that they would go to an inner city youth facility once a week, 2 - 3 times per week, or at weekends. There was little difference in the groups interviewed in the City and in the suburbs as shown in the following percentages of respondents to these three categories:

	Once a Week	2-3 Times Per Week	Weekends
Those interviewed in the City	24%	31%	19%
Those interviewed in the Suburbs	26%	26%	25%

Total data from both groups is shown below, by age and gender:

Frequency of use of a youth facility, by age:

Age	Daily	Once a Week	2-3 Times per Week	Every couple of weeks	Occasion-ally	Weekend	Blank	Total
8-12yrs	0	1	2	1	1	1	0	6
13-15 yrs	7	40	24	5	11	31	3	121
16-18 yrs	16	61	65	15	22	55	6	240
19-25 yrs	27	43	86	13	28	25	7	229
26yrs +	2	2	4	1	2	2	1	14
Blank	0	5	0	1	0	1	0	7
Total	52	152	181	36	64	115	17	617

Frequency of use of a youth facility, by gender:

	Blank	Female	Male	Total
2-3 Times/Week	1	61 (21%)	119 (37%)	181
Daily	0	19 (7%)	33 (10%)	52
Every Couple of Weeks	1	19 (7%)	16 (5%)	36
Occasionally	0	39 (12%)	25 (8%)	64
Once a Week	2	74 (26%)	76 (24%)	152
Weekends	0	69 (24%)	46 (14%)	115
Blank	1	9 (3%)	7 (2%)	17
Total	5	290	322	617

2.6.3. Willingness to Contribute Time & Skills

(Question 18: Would you be prepared to invest any skills or time to help in the development and maintenance of such a facility?)

The contact details of young people who wished to help were noted on a separate sheet. The results were:

- 110 young people expressed an interest in assisting in various aspects of the proposed youth facility;
- multiple responses were allowed;
- 13 individuals felt they had no skills to offer but would still like to help.

Anything	4
Art	11
AV Technician	1
Bookshop	1
Build Ramps	1
Café	8
Circus	1
Community Action	2
Concerts	3
Dance	6
DJ	2
Editing	3
Environmental aspects	2
Gallery	3
Graffiti	15
Help Out	2
Interior Decorating	1
Internet	3
Management	1
Martial Arts	1
Miscellaneous	2
Music	21
Painting	1
Photography	9
Services	1
Skateboarding	17
SKAWA Membership	5
Sport	2
Teach cartooning	1
Blank response	13
TOTAL	130

2.7. Part 2 of the Survey: Young People's Preferences in Relation to Skateboarding, BMX & Inline Skating

Section 2 of the survey provided information in relation to those young people who were surveyed and are participants in skateboarding, BMX riding or inline skating. The aim of Section 2 was to understand the demand for these activities.

2.7.1. Number of Participants in Skateboarding, BMX, Inline Skating

(Section 2, Question 1: Do you Skate, BMX, Inline Skate)

The responses are analysed for each group interviewed (City and suburban) and by age and gender.

Those interviewed in the City:

Age	BMX	BMX, Inline	Inline Skate	Roller skate	Skatebd	Skatebd , BMX	Skatebd , BMX, Inline	Skatebd , Inline	Unicycl e	Total
8-12yrs	0	0	1	0	1	0	0	0	0	2
13-15 yrs	7	2	9	0	22	6	1	3	0	50
16-18 yrs	9	1	9	1	33	7	4	2	1	67
19-25 yrs	6	1	10	1	33	5	0	4	0	60
26yrs +	0	0	0	0	2	0	0	0	0	2
Blank	0	0	0	0	1	1	0	1	0	3
Total	22	4	29	2	92	19	5	10	1	184

Those interviewed in the Suburbs:

Age	BMX	BMX, Inline	Inline Skate	Roller skate	Skatebd	Skatebd , BMX	Skatebd , BMX, Inline	Skatebd , Inline	Unicycl e	Total
8-12yrs	0	0	2	0	1	0	0	0	0	3
13-15 yrs	1	1	4	0	17	2	0	0	0	25
16-18 yrs	0	1	9	0	14	1	0	0	0	25
19-25 yrs	1	0	8	0	25	3	0	1	0	38
26yrs +	0	0	0	0	0	1	0	1	0	2
Blank	0	0	0	0	0	0	0	0	0	0
Total	2	2	23	0	57	7	0	2	0	93

Total, City & Suburbs:

Age	BMX	BMX, Inline	Inline Skate	Roller skate	Skatebd	Skatebd , BMX	Skatebd , BMX, Inline	Skatebd , Inline	Unicycl e	Total
City	22	4	29	2	92	19	5	10	1	184
Suburbs	2	2	23	0	57	7	0	2	0	93
Total	24	6	52	2	149	26	5	12	1	277

Total Participants, City & Suburbs, by Gender:

Gender	BMX	BMX, Inline	Inline Skate	Roller skate	Skatebd	Skatebd , BMX	Skatebd , BMX, Inline	Skatebd , Inline	Unicycl e	Total
Female	8	2	28	2	26	2	1	2	1	72
Male	16	4	22	0	123	24	4	10	0	203
Blank	0	0	2	0	0	0	0	0	0	2
Total	24	6	52	2	149	26	5	12	1	277

2.7.2. Demand for an Inner City Skate Park

(Section 2, Question 5: Would you be prepared to use an inner city Skate Park, yes/no)

Of the young people who participated in Section 2 of the survey over 95% indicated that they would use an inner city skateboarding facility, with little difference between those interviewed in the City and those interviewed in the suburbs.

Demand for an Inner City Skate Park:

Those interviewed in the City:

Age	Yes	No	Total
8-12yrs	2	0	2
13-15 yrs	47	2	49
16-18 yrs	63	3	66
19-25 yrs	56	4	60
26yrs +	2	0	2
Blank	3	0	3
Total	173	9	182

Those interviewed in the Suburbs:

Age	Yes	No	Total
8-12yrs	3	0	3
13-15 yrs	23	2	25
16-18 yrs	24	1	25
19-25 yrs	38	0	38
26yrs +	2	0	2
Blank	0	0	0
Total	90	3	93

Demand for an Inner City Skate Park:

Total Interviewed:

Age	Yes	No	Total
8-12yrs	5	4	9
13-15 yrs	70	4	74
16-18 yrs	87	4	91
19-25 yrs	94	0	94
26yrs +	4	0	4
Blank	3	0	3
Total	263	12	275

2.7.3. Preferred Time for Skating/Riding

(Section 2, Question 9: When do you prefer Skating/Riding?)

Morning 6-12am Afternoon 12-6pm Evening 6-10pm Night 10pm - 6 am)

46% of skateboarders have indicated that their preferred time for skating is in the afternoon, with 33% preferring the evening. There is no difference between the City and metropolitan data.

Preferred Time for Skating:

Those Interviewed in the City:

Age	Mornin g	After- noon	Evening	Night	Total
8-12yrs	0	1	1	0	2
13-15 yrs	10	27	15	4	56
16-18 yrs	9	35	20	7	71
19-25 yrs	4	30	28	11	73
26yrs +	0	2	1	0	3
Blank	1	1	1	1	4
Total	24	96	66	23	209

Preferred Time for Skating:**Those Interviewed in the Suburbs:**

Age	Morning	Afternoon	Evening	Night	Total
8-12yrs	1	3	0	0	4
13-15 yrs	3	14	7	0	24
16-18 yrs	5	16	14	2	37
19-25 yrs	6	20	19	7	52
26yrs +	0	1	1	1	3
Blank	0	0	0	0	0
Total	15	54	41	10	120

Preferred Time for Skating:**Total Interviewed:**

	Morning	Afternoon	Evening	Night	Total
City	24	96	66	23	209
Suburbs	15	54	41	10	120
Total	39	150	107	33	329

2.7.4. Charges for Inner City Skate Park (Affordability)

(Section 2, Question 7: How much would you be prepared to pay to use this facility?)

Suggested Full Day Charge¹⁸:

	Free	\$2-\$5	\$6-\$9	\$10	\$11-\$15	\$16-\$20	Total
Total No. of Responses	17	186	26	29	2	1	261

¹⁸ A full day charge has been used as a means of grouping the data on charges. However a scale of charges would apply for sessions and half day use of the skateboarding facility.

3. APPENDICES

3.1. Appendix 1: Membership of the Integrated Youth Facility Reference Group

- Graham Brimage, Director Recreation, Ministry of Sport and Recreation
- Alexandra Bruce, Councillor, Town of Vincent
- Les Cooper, Director Information Services, Lotteries Commission (and Rotary Club of Heirisson)
- Mike Daube, Executive Director, Office of Youth Affairs
- Lana Glogowski, Community Development Officer, Family & Children's Services
- Peter Grant, Director Artrage Festival
- Bob Kucera, Assistant Commissioner, WA Police Service
- Ian Matthews, Mentor, Skateboarding Association of WA Inc (and Reference Group Coordinator)
- Elizabeth Napier, Manager Community Services, City of Perth
- Liz Pattison, Rotary Club of Heirisson
- Graham Pereira, Chairperson, Skateboarding Association of WA Inc (and Youth Representative)
- John Ravlic, Director Strategic Planning, City of Perth
- Kim Reynolds, Vice Chairperson, Skateboarding Association of WA Inc (and Youth Representative)
- Bill Sutton, Councillor, City of Perth

3.2. Appendix 2: Survey Form



YOUTH STREET INTERCEPT SURVEY:

Hi my name is
I'm conducting a survey about how Young People use the city and what they want from the city. It will take approximately 10 minutes. Would you like to have your say?

TIME OF SURVEY:

(Circle) **Morning**(6-12am) **Afternoon**(12-6pm) **Evening**(6-10pm) **Night**(10-6am)

AGE: GENDER Male
Female

SUBURB/TOWN OF HOME: _____ POST
CODE: _____

SECTION ONE

1. DO YOU LIVE IN THE CITY? YES
NO

2. (IF NO) HOW OFTEN ON AVERAGE DO YOU COME TO THE CITY AND/OR NORTHBRIDGE?

Daily 2-3 Times a week Once a week On weekends
 Every couple of weeks Occasionally

3. HOW DO YOU GET HERE? (transport?)

Bus Train Private Transport Other

(specify) _____

4. WHAT ATTRACTS YOU TO THE CITY AND/OR NORTHBRIDGE?

5. HOW MUCH \$ ON AVERAGE DO YOU BRING WITH YOU?

(Circle) \$0-5 \$6-10 \$11-15 \$16-20 \$21-30 \$31-40 \$41-50 \$51+

6. ON AVERAGE HOW LONG DO YOU SPEND IN THE CITY AND/OR NORTHBRIDGE?

- | | |
|---|------------------------------------|
| <input type="checkbox"/> Less than 1 hour | <input type="checkbox"/> 3-4 hours |
| <input type="checkbox"/> 1-2 hours | <input type="checkbox"/> 4-6 hours |
| <input type="checkbox"/> 2-3 hours | <input type="checkbox"/> 6-8 hours |

Other
(specify) _____

7. HOW DO YOU GET HOME?

- Bus Train Private Transport Other

(note any difficulties) _____

8. WHAT DAYS WOULD YOU NORMALLY COME TO THE CITY AND/OR NORTHBRIDGE?

(Circle) **Mon** **Tues** **Wed** **Thur** **Fri** **Sat** **Sun**

9. WHAT TIME OF DAY WOULD YOU USUALLY BE IN THE CITY AND/OR NORTHBRIDGE?

(Circle) **Morning(6-12am)** **Afternoon(12-6pm)** **Evening(6-10pm)** **Night(10-6am)**

10. HOW LONG HAVE/WILL YOU SPEND TODAY?

- | | |
|---|------------------------------------|
| <input type="checkbox"/> Less than 1 hour | <input type="checkbox"/> 3-4 hours |
| <input type="checkbox"/> 1-2 hours | <input type="checkbox"/> 4-6 hours |
| <input type="checkbox"/> 2-3 hours | <input type="checkbox"/> More |

The City of Perth is planning to hold a Youth Forum to identify issues important to Young People visiting the city.

11. WHAT ARE YOUR TOP 3 ISSUES/HASSLES WITH THE CITY?

- I. _____
- II. _____
- III. _____

12. HOW CAN THE CITY GET YOUNG PEOPLE TO SPEAK OUT ABOUT ISSUES AND CONCERNS IN THE CITY?

(specify) _____

13. DO YOU THINK ANY OF THE FOLLOWING WILL ATTRACT YOURSELF OR OTHER YOUNG PEOPLE?

- Free youth concert including interviews and questionnaires
- Video interviews
- Internet chat room/website
- Incentives like vouchers for fast food or entertainment

14. HOW MUCH DO YOU SPEND ON FOOD/DRINK WHEN YOU COME TO THE CITY/NORTHBRIDGE?

(Circle) \$0-5 \$6-10 \$11-15 \$16-20 \$21-30 \$31-40 \$41-50 \$51+

15. HOW MUCH CAN YOU AFFORD TO SPEND ON ENTERTAINMENT EACH WEEK?

(Circle) \$0-5 \$6-10 \$11-15 \$16-20 \$21-30 \$31-40 \$41-50 \$51+

SKAWA has been attempting to get an inner city facility going for Young People. We have a number of ideas for activities but would like to know what you like doing?

16. WHAT ACTIVITIES WOULD YOU LIKE TO SEE IN A LARGE YOUTH FACILITY?

- | | | | |
|---------------------|--------------------------|-------------------------|--------------------------|
| Skateboarding | <input type="checkbox"/> | Arts Workshops | <input type="checkbox"/> |
| Recording Studio | <input type="checkbox"/> | Climbing Wall | <input type="checkbox"/> |
| Music Workshop | <input type="checkbox"/> | Health Welfare Services | <input type="checkbox"/> |
| Graffiti Art | <input type="checkbox"/> | Cheap Cafe | <input type="checkbox"/> |
| Publishing Facility | <input type="checkbox"/> | Photography | <input type="checkbox"/> |
| Competitions | <input type="checkbox"/> | Concerts | <input type="checkbox"/> |
| Internet Access | <input type="checkbox"/> | Dance/Movement | <input type="checkbox"/> |
| Edit Suit | <input type="checkbox"/> | Other (interests) | <input type="checkbox"/> |

(specify) _____

17. HOW OFTEN WOULD YOU GO TO THIS TYPE OF FACILITY?

- Daily 2-3 Times a week Once a week On weekends
- Every couple of weeks Occasionally

18. WOULD YOU BE PREPARED TO INVEST ANY SKILLS OR TIME TO HELP IN THE DEVELOPMENT AND MAINTENANCE OF SUCH FACILITY?
(If yes ask for name and address on separate sheet provided)

SECTION TWO

1. DO YOU - SKATE?
BMX?
INLINE SKATE? **YES - KEEP GOING**

IF NO - THANK YOU FOR TAKING THE TIME TO HELP YOUNG PEOPLE HAVE THEIR SAY.

2. HOW OFTEN DO YOU DO THE ABOVE?

Daily 2-3 Times a week Once a week On weekends
 Every couple of weeks Occasionally

3. WHERE DO YOU LIKE TO SKATE/RIDE?

(Circle) INNER CITY / SUBURBS / INDUSTRIAL / SKATE PARKS / SCHOOLS

(Other) _____

4. ARE YOU SATISFIED BY WHAT EXISTS FOR YOUR RECREATION?
IF NOT, WHY?

5. WOULD YOU BE PREPARED TO USE AN INNER/CITY SKATE PARK?

YES NO

6. DO YOU THINK A SKATE PARK WOULD HELP TO DEVELOP YOUR SKILLS?

YES NO Other Response

(specify) _____

7. HOW MUCH WOULD YOU BE PREPARED TO PAY TO USE THIS FACILITY?

8. WHERE WOULD YOU PREFER SKATING/RIDING?

- INDOOR
- OUTDOOR
- BOTH

9. WHEN DO YOU PREFER SKATING/RIDING?

(Circle) **Morning**(6-12am) **Afternoon**(12-6pm) **Evening**(6-10pm) **Night**(10-6am)
In any spare time

10. WHAT KIND OF OBSTACLES WOULD YOU LIKE TO SEE AT A VENUE?

- | | | | |
|-----------|--------------------------|-----------------|--------------------------|
| Mini Ramp | <input type="checkbox"/> | Concrete Bowl | <input type="checkbox"/> |
| Vert Ramp | <input type="checkbox"/> | Street course | <input type="checkbox"/> |
| Snake Run | <input type="checkbox"/> | Other (Specify) | <input type="checkbox"/> |

11. ARE THERE ANY FACILITIES TO USE IN YOUR AREA?

- YES NO

12. IF YES, WHAT ARE THEY?

13. HOW MANY YEARS HAVE YOU BEEN SKATING?

14. HAVE YOU EVER HAD AN ACCIDENT WITH PEDESTRIANS OR MOTOR VEHICLE AS A RESULT OF HAVING NO WHERE TO SKATE BUT THE ROAD/FOOTPATH?

THANK YOU FOR TAKING THE TIME TO HELP YOUNG PEOPLE HAVE THEIR SAY.